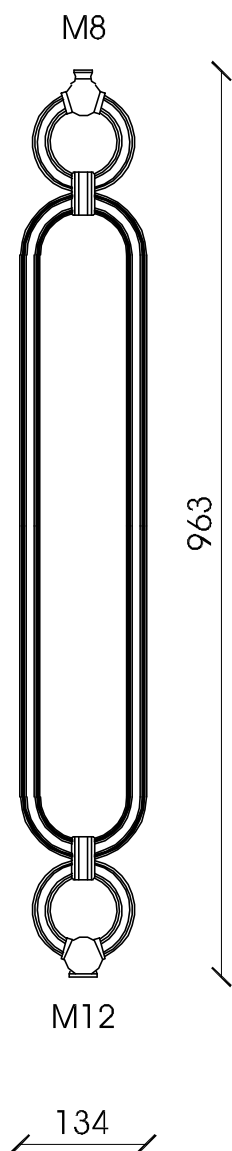


BR 07

Cast iron element for vertical (**V**) or lateral (**L**) fixing, supplied with M8 upper threaded hole and M12 lower threaded hole. Surface protection: sandblasting, one component zinc coat by immersion, two-component zinc phosphate primer coat, two bicomponent finishing standard gray paint (**S**) or with RAL colors on request.



BR 07 VS

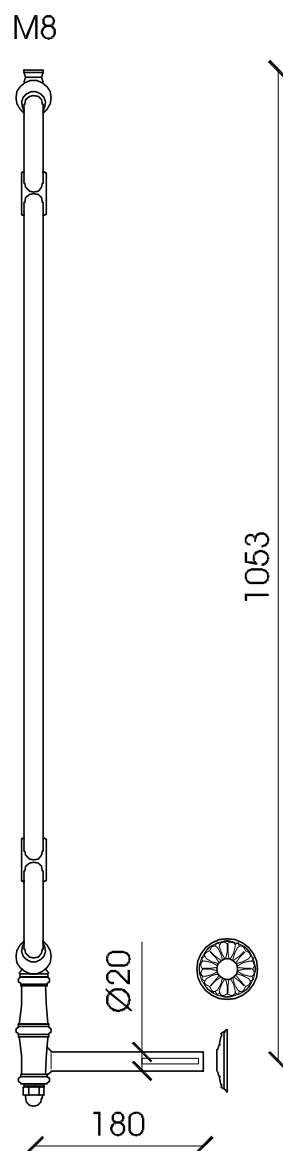
Vertical fixing element

MATERIAL

Cast iron casting GLJ-200 (UNI EN 1561)

WEIGHT

Kg. 4,7



BR 07 LS

Lateral fixing element

MATERIAL

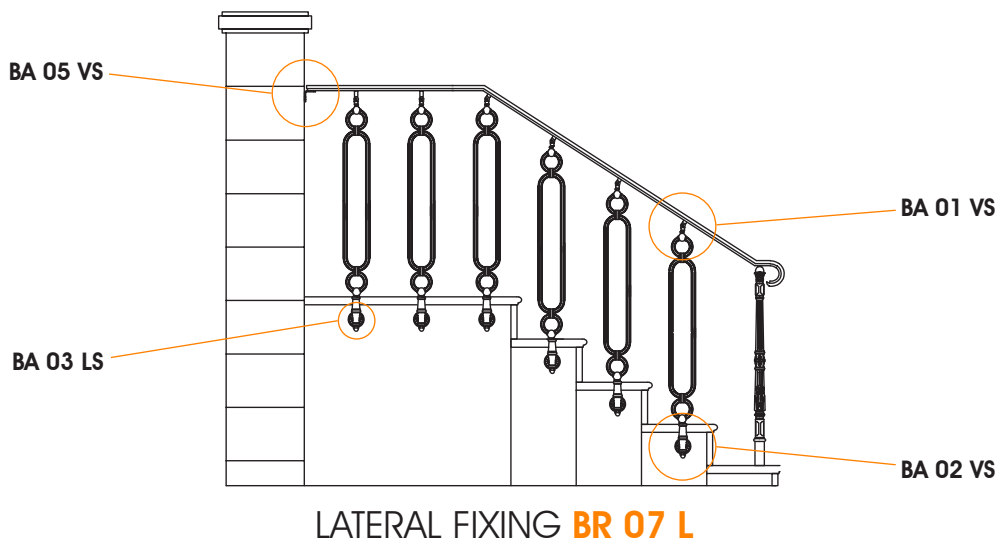
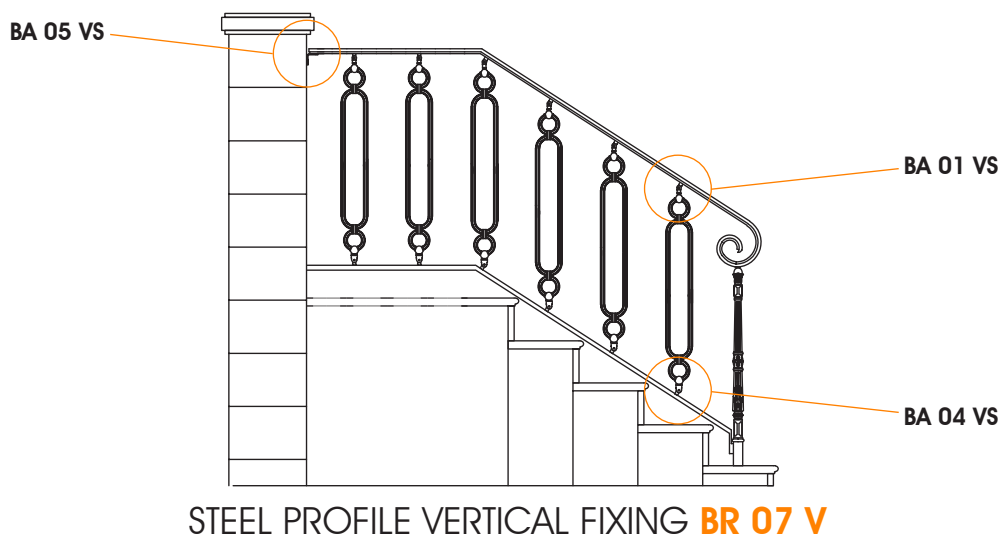
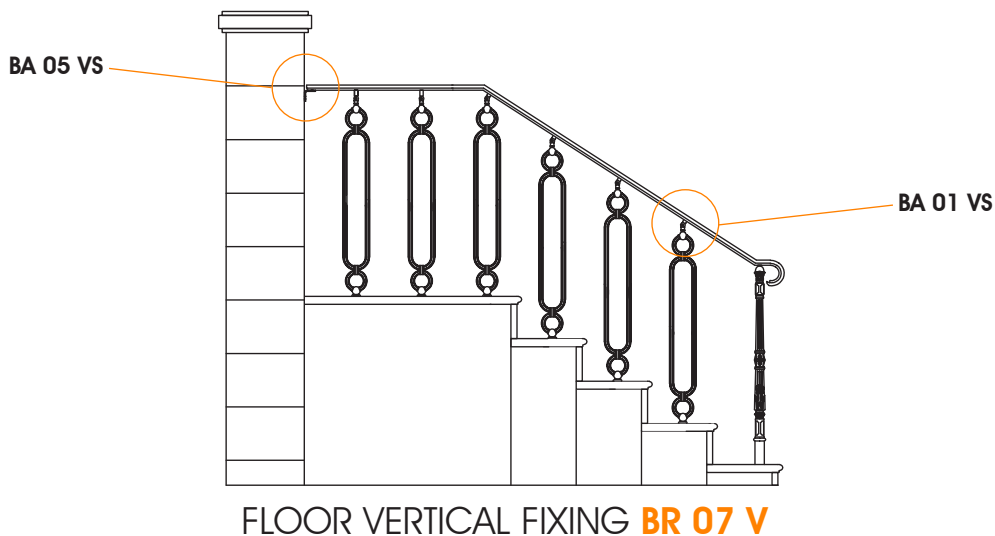
Cast iron casting GLJ-200 (UNI EN 1561)

Spheroidal cast iron lateral fixing (UNI EN 1561)
cast aluminium cover hole rosette

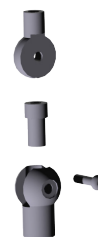
WEIGHT

Kg. 5,4

INSTALLATION EXAMPLES



ACCESSORIES



BA 01 VS
UPPER FIXING



BA 04 VS
LOWER FIXING



BA 05 VS
WALL FIXING



BA 02 LS
LATERAL FIXING



BA 03 LS
COVER FOR HOLE
ROSETTE