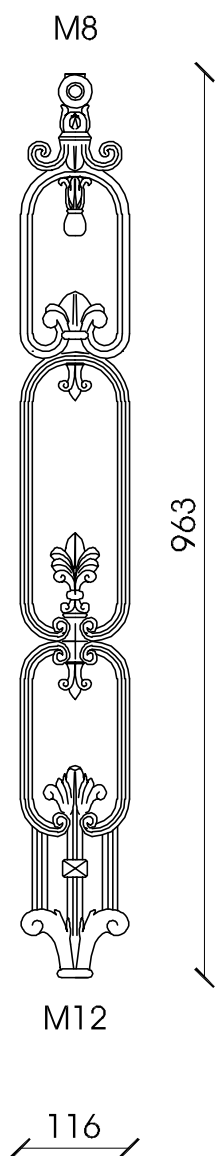


## BR 11

Cast iron element for vertical (V) or lateral (L) fixing, supplied with M8 upper threaded hole and M12 lower threaded hole. Surface protection: sandblasting, one component zinc coat by immersion, two-component zinc phosphate primer coat, two bicomponent finishing standard gray paint (S) or with RAL colors on request.



### BR 11 VS

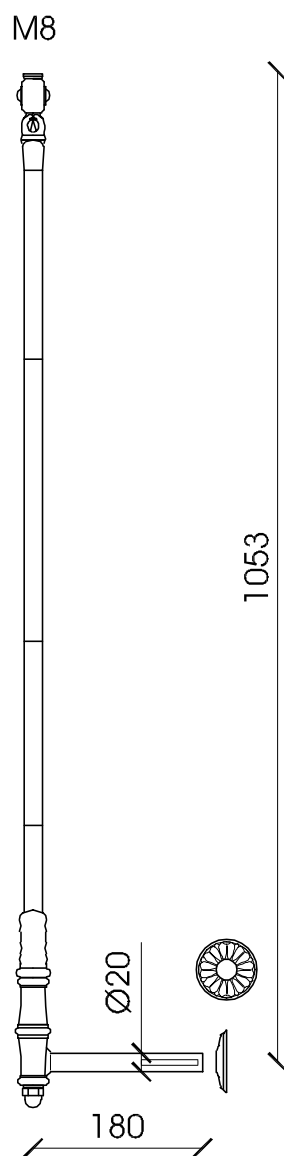
Vertical fixing element

**MATERIAL**

Cast iron casting GLJ-200 (UNI EN 1561)

**WEIGHT**

Kg. 5,5



### BR 11 LS

Lateral fixing element

**MATERIAL**

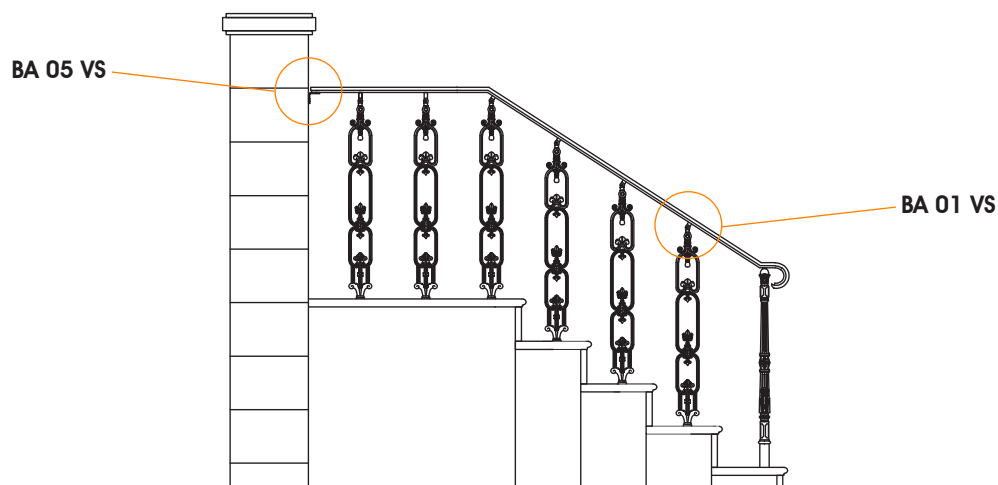
Cast iron casting GLJ-200 (UNI EN 1561)

Spheroidal cast iron lateral fixing (UNI EN 1561)  
cast aluminium cover hole rosette

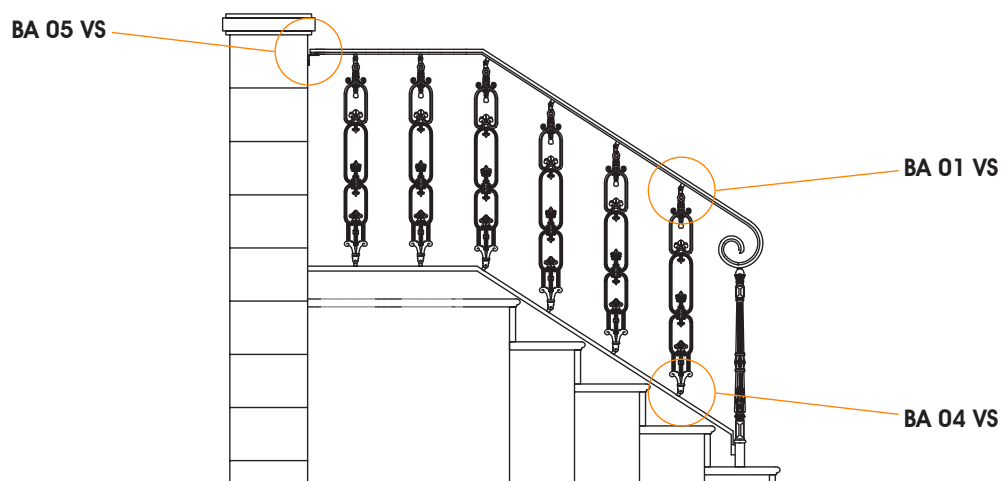
**WEIGHT**

Kg. 6,2

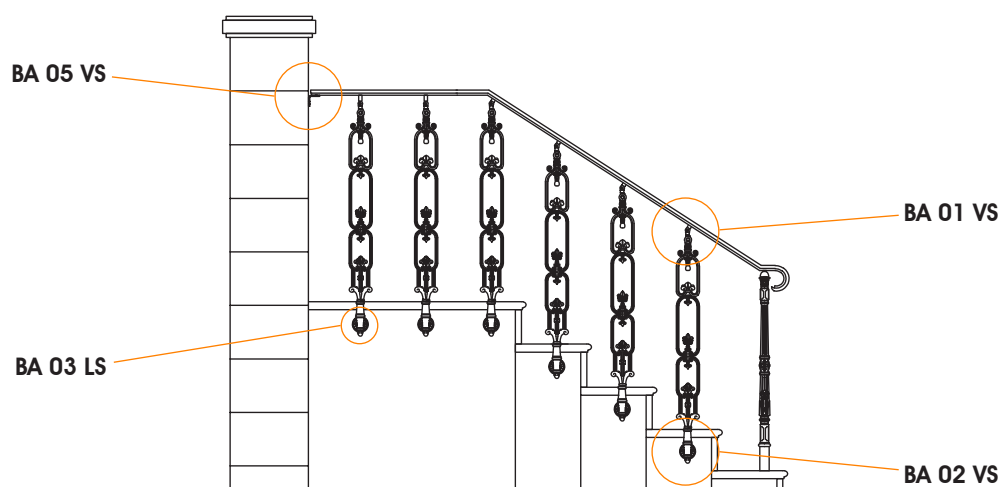
## INSTALLATION EXAMPLES



FLOOR VERTICAL FIXING **BR 11 V**

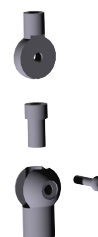


STEEL PROFILE VERTICAL FIXING **BR 11 V**



LATERAL FIXING **BR 11 L**

## ACCESSORIES



BA 01 VS  
UPPER FIXING



BA 04 VS  
LOWER FIXING



BA 05 VS  
WALL FIXING



BA 02 LS  
LATERAL FIXING



BA 03 LS  
COVER FOR HOLE  
ROSETTE