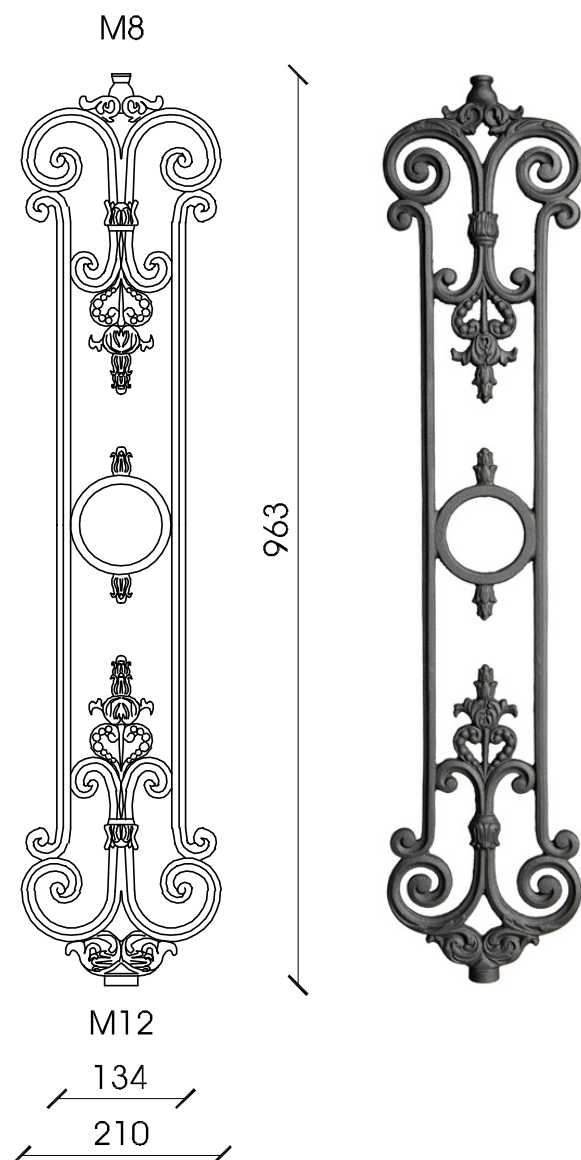


BR 20

Cast iron element for vertical (**V**) or lateral (**L**) fixing, supplied with M8 upper threaded hole and M12 lower threaded hole. Surface protection: sandblasting, one component zinc coat by immersion, two-component zinc phosphate primer coat, two bicomponent finishing standard gray paint (**S**) or with RAL colors on request.



BR 20 VS

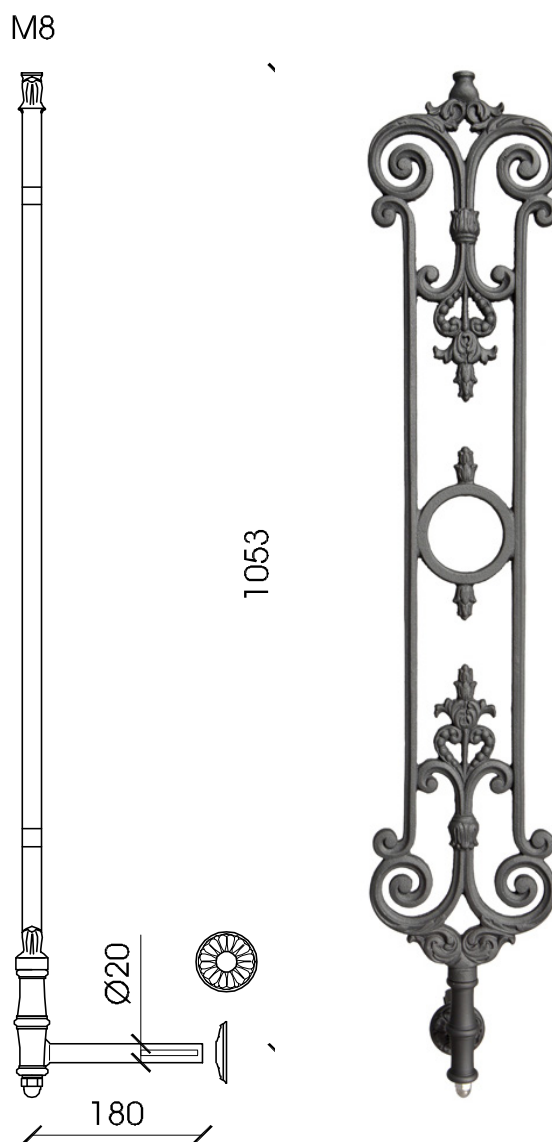
Vertical fixing element

MATERIAL

Cast iron casting GLJ-200 (UNI EN 1561)

WEIGHT

Kg. 6,3



BR 20 LS

Lateral fixing element

MATERIAL

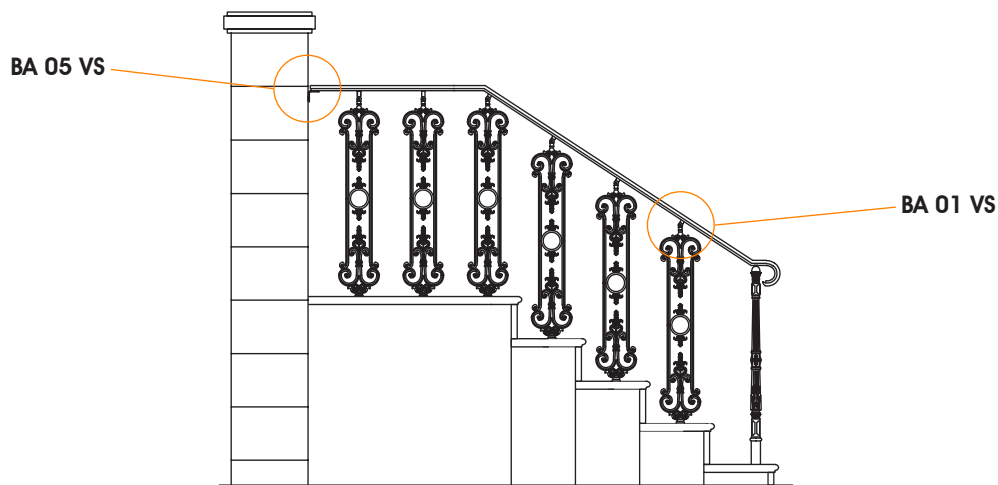
Cast iron casting GLJ-200 (UNI EN 1561)

Spheroidal cast iron lateral fixing (UNI EN 1561)
cast aluminium cover hole rosette

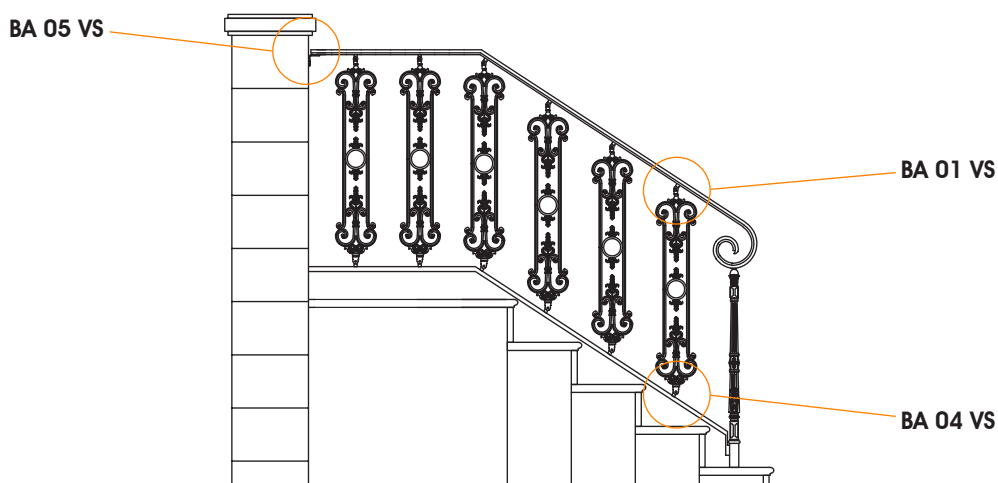
WEIGHT

Kg. 7

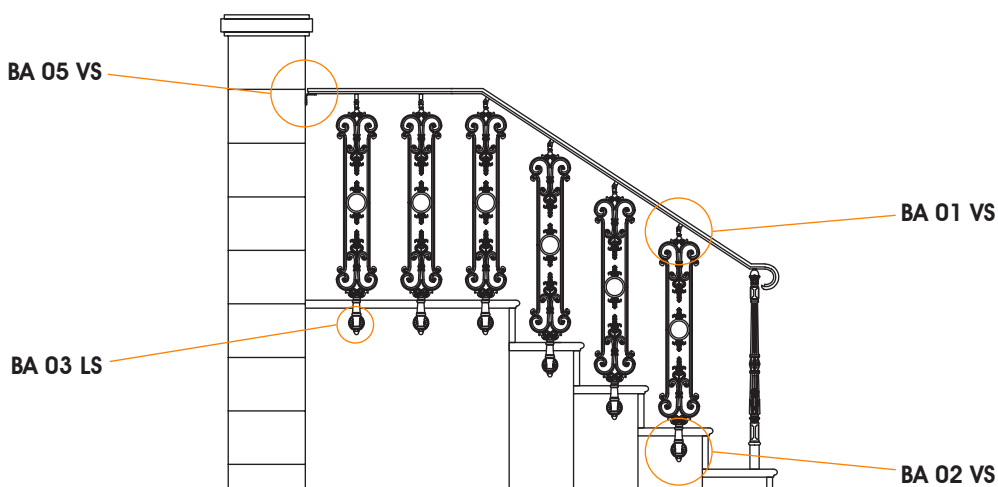
INSTALLATION EXAMPLES



FLOOR VERTICAL FIXING **BR 20 V**

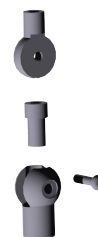


STEEL PROFILE VERTICAL FIXING **BR 20 V**



LATERAL FIXING **BR 20 L**

ACCESSORIES



BA 01 VS
UPPER FIXING



BA 04 VS
LOWER FIXING



BA 05 VS
WALL FIXING



BA 02 LS
LATERAL FIXING



BA 03 LS
COVER FOR HOLE
ROSETTE