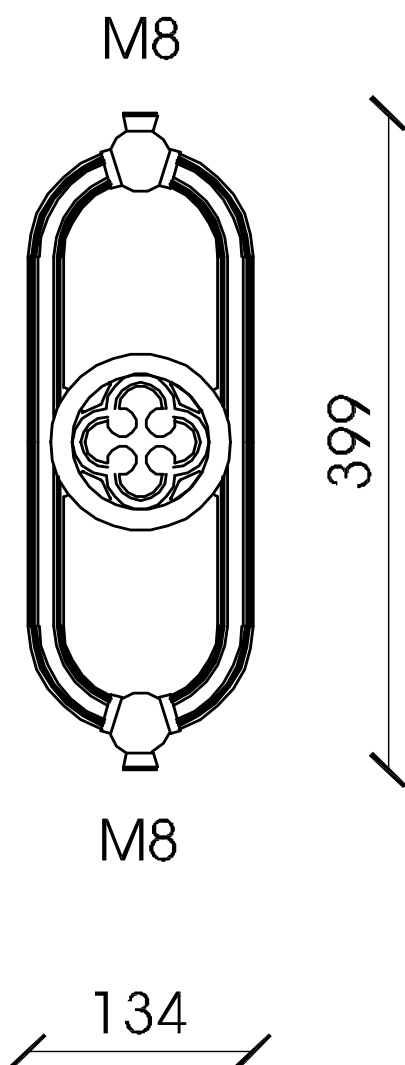


## BR 08

Cast iron element for vertical (V), supplied with M8 upper and lower threaded hole.  
 Surface protection: sandblasting, one component zinc coat by immersion, two-component zinc phosphate primer coat, two bicomponent finishing standard gray paint (S)  
 or with RAL colors on request.



## BR 08 VS

Vertical fixing element

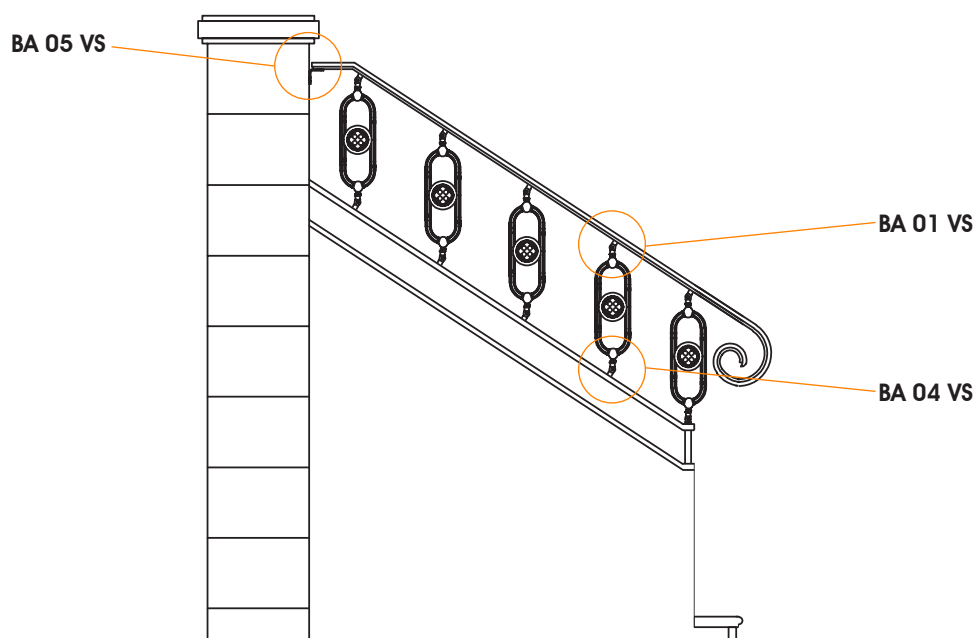
### MATERIAL

Cast iron casting GLJ-200 (UNI EN 1561)

### WEIGHT

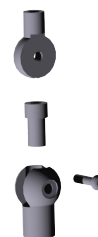
Kg. 5,5

## INSTALLATION EXAMPLES



STEEL PROFILE VERTICAL FIXING **BR 08 V**

## ACCESSORIES



**BA 01 VS**  
UPPER FIXING



**BA 04 VS**  
LOWER FIXING



**BA 05 VS**  
WALL FIXING