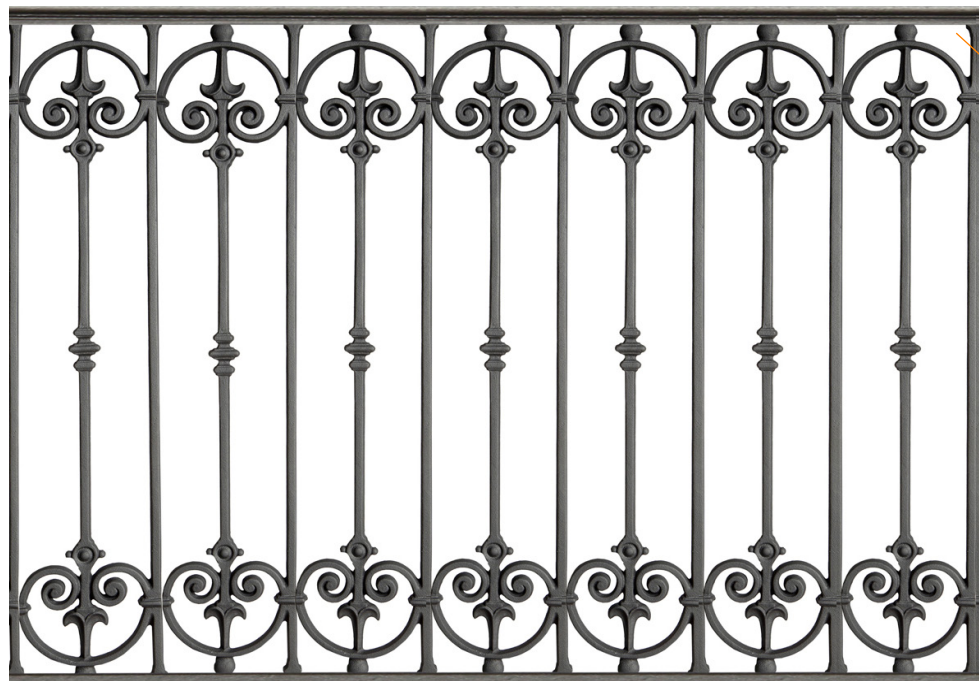


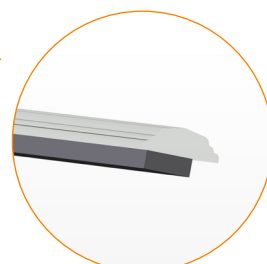
PANNELLO COMPLETO CON ELEMENTO IN GHISA BR 14

Struttura modulare in acciaio zincato a caldo secondo norma UNI EN ISO 1461 con elementi decorativi in fusione di ghisa lamellare UNI EN GLJ 200 (**BG 14**).
Colore standard grigio antracite (**S**) o colorazioni RAL su richiesta.

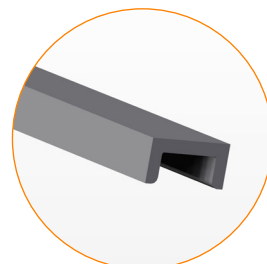
PANNELLO BG 14



CORRIMANO SAGOMATO
IN ACCIAIO
50x15 mm.



PIATTO
IN ACCIAIO
30x10 mm.



PROFILATO
IN ACCIAIO A "U"
40x20 mm.

ACCESSORI DI COMPLETAMENTO

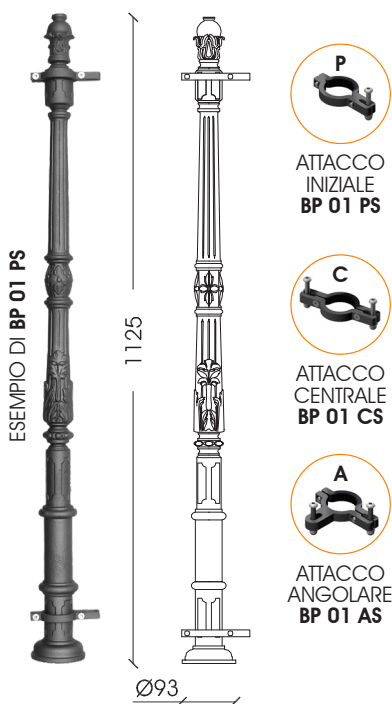
Paletti decorati in fusione di ghisa sferoidale UNI EN GJS 400 (**BP 01-BP 02**).

Paletto liscio in acciaio S235JR (UNI EN 10025) completo di copriforo e decoro superiore (**BP 03**).

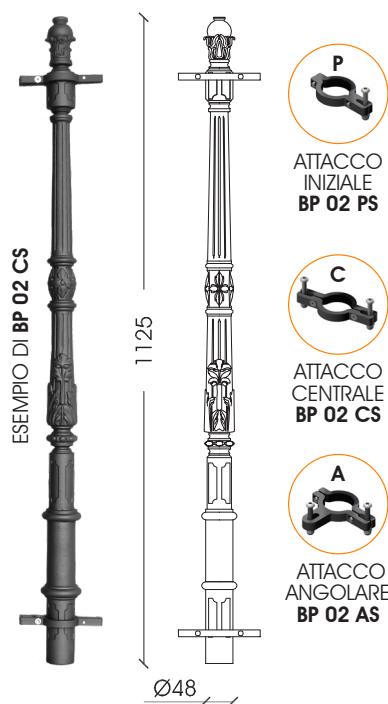
Attacchi idonei a diverse configurazioni: iniziale (**P**), centrale 180° (**C**), angolare 90° (**A**).

Colore standard grigio antracite (**S**) o colorazioni RAL su richiesta.

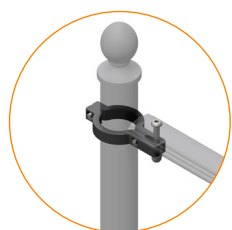
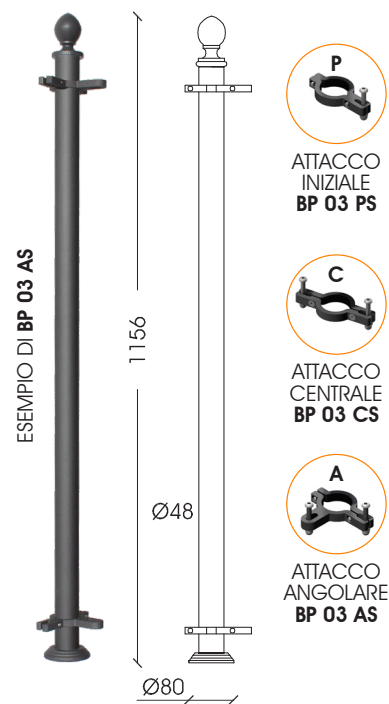
PALETTO IN GHISA **BP 01**



PALETTO IN GHISA **BP 02**



PALETTO IN ACCIAIO **BP 03**



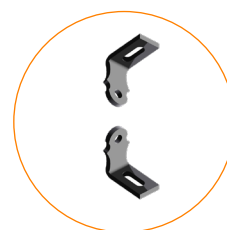
ATTACCO INIZIALE **P**



ATTACCO CENTRALE **C**



ATTACCO ANGOLARE **A**



STAFFE A MURO **BA.05 VS**

